

PART OF THE W. 1/2, OF SECTION 14, T.6N., R.1E., S.L.B. & M.  
**MERRILL'S MOUNTAIN ESTATE PHASE 2**

180

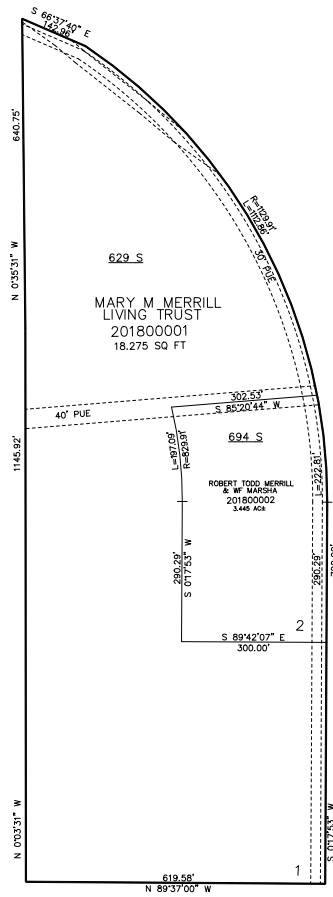
TAXING UNIT: 520

IN WEBER COUNTY  
SCALE 1" = 200'

SEE PAGE 15

SEE PAGE 15

SEE PAGE 15



10' UTILITY & DRAINAGE EASEMENTS EACH  
SIDE OF PROPERTY LINES AS INDICATED  
BY DASHED LINES EXCEPT AS OTHERWISE  
SHOWN.

SEE PAGE 15

FOR COMPLETE ENC DATA SEE  
ORIGINAL DEDICATION PLAT IN  
BOOK 89, PAGE 32 OF RECORDS.